



Swine Skillathon
Study Sheets for
~ Intermediate (ages 12 - 14) ~



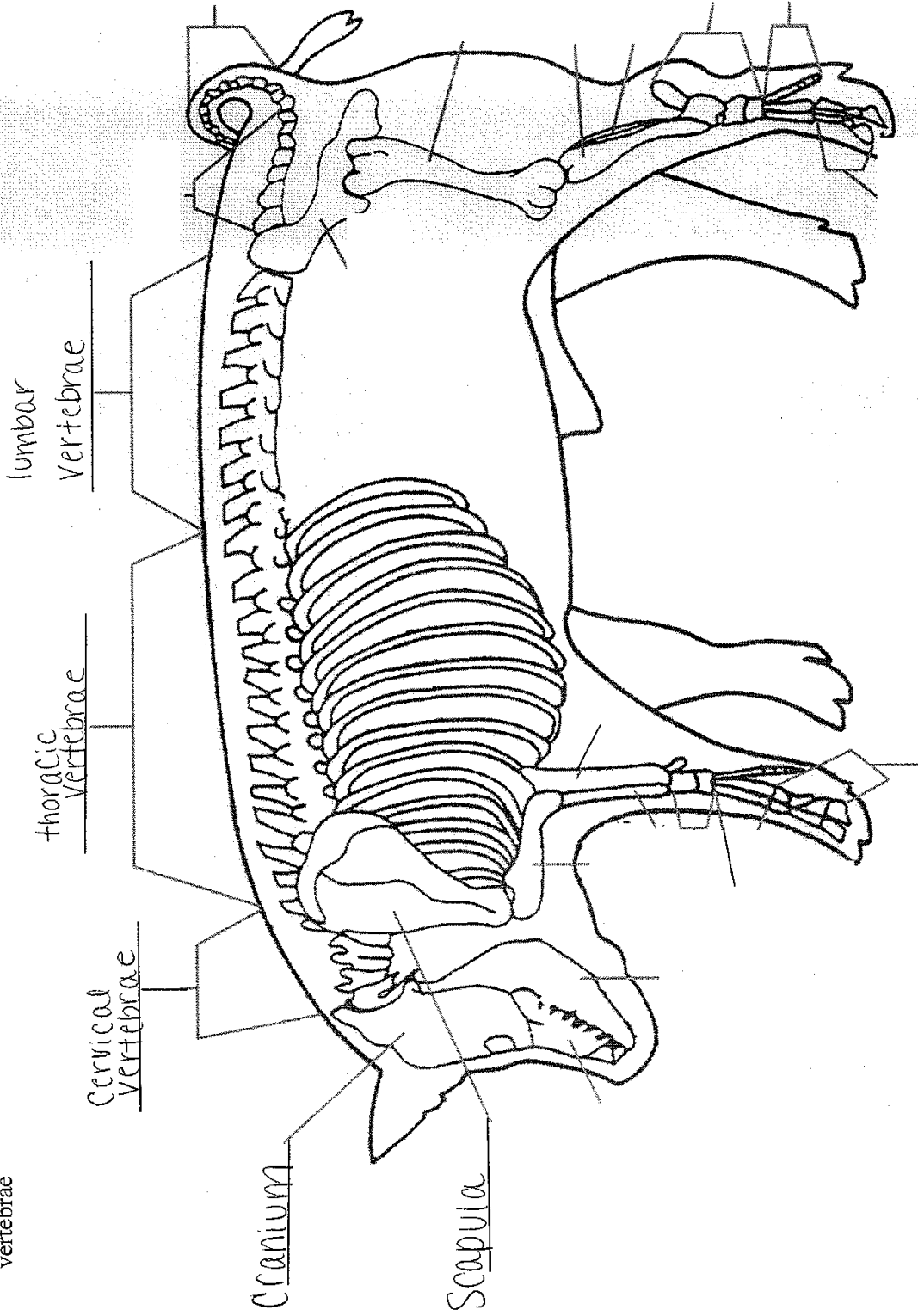
Updated 2023

Intermediate
(4-H ages 12-14)

1. Identify parts of the swine skeleton: Cranium, Scapula, Cervical Vertebrae, Thoracic Vertebrae, and Lumbar Vertebrae
2. Complete a feed tag worksheet
3. Read and label a medication label
4. Identify 6 diseases to their symptoms: Ringworm, Erysipelas, Leptospirosis, Salmonellosis, Influenza, and Streptococcus

Intermediate

Word bank: cranium, femur, scapula, cervical vertebrae, lumbar vertebrae, thoracic vertebrae



Swine Diseases

Directions: Match the disease name with the correct symptoms.

Disease Name

Disease Symptom

Ringworm



Caused by the fungi *Microsporum nanum* or *Trichophyton verrucosum*. **Signs:** Crusty, dark, hairless patches; common on the skin around the head and neck; thorax, flank, behind the ears, on the legs.

Erysipelas



Bacterial disease that can cause sudden death, fever, diamond skin lesions, arthritis, heart valve lesions, and abortion. **Signs:** Fever, thinness, red diamond shaped patches, lameness.

Salmonellosis



Bacterial infection caused by a species of *Salmonella*. **Signs:** Diarrhea.

Influenza



An acute and highly contagious respiratory disease caused by a viral infection. **Signs:** Fever, depression, coughing (barking), discharge from the nose or eyes, sneezing, difficulty breathing, thinness.

Leptospirosis



A disease that can cause abortions, stillbirths, mummies, weak pigs, and decreased litter size. **Signs:** decrease in weight, abortion, still births, fever, and diarrhea.

Streptococcus
Suis



Bacterial infection carried in the nose and tonsils of swine; often acquired by piglets during farrowing. **Signs:** Depression, shaking, loss of balance, blindness, paralysis, and paddling of the legs.

PIG GROWER MEDICATED

FOR PIGS FROM 30 POUNDS TO 75 POUNDS

ADMINISTER TO SWINE IN A COMPLETE FEED FOR REDUCTION OF THE INCIDENCE OF CERVICAL ABSCESES; TREATMENT OF BACTERIAL SWINE ENTERITIS (SALMONELLOSIS OR NECROTIC ENTERITIS CAUSED BY SALMONELLA CHOLERAESUIS AND VIBRIONIC DYSENTERY). MAINTENANCE OF WEIGHT GAINS IN THE PRESENCE OF ATROPHIC RHINITIS.

ACTIVE DRUG INGREDIENT

CHLOROTETRACYCLINE 100 G/TON

GUARANTEED ANALYSIS

CRUDE PROTEIN	MIN 19.00%
LYSINE	MIN. 1.10%
CRUDE FAT	MIN. 5.00%
CRUDE FIBER	MAX. 4.00%
CALCIUM	MIN. 0.60%
CALCIUM	MAX. 1.10%
PHOSPHORUS	MIN. 0.55%
SALT	MIN. 0.40%
SALT	MAX. 0.90%
SELENIUM	MIN. 0.30 PPM
ZINC	MIN. 140.00 PPM

INGREDIENTS

Grain Products, Plant Protein Products, Processed Grain By-Products, Animal Fat, Animal Protein Products, Calcium Phosphate, Lignin Sulfonate, Ground Limestone, Salt, L-Lysine Monohydrochloride, Methionine Supplement, Zinc Oxide, Zinc Sulfate, Ferrous Sulphate, Manganous Oxide, Copper Sulfate, Calcium Iodate, Sodium Selenite, Vitamin A Acetate, Vitamin D-3 Supplement, Vitamin E Supplement, Menadiolone Dimethylpyrimidinol Bisulphite, Riboflavin Supplement, Niacin, Calcium Panthothenate, Vitamin B-12 Supplement, Thiamine Mononitrate, Folic Acid, Choline Chloride, Pyridoxine Hydrochloride, Biotin, Ethoxyquin (As A Preservative)

FEEDING DIRECTIONS

FEED as the only ration to pigs weighing from 30 pounds to 75 pounds bodyweight.

CAUTION: In order to obtain the desired performance results, the animals should be self fed.

WARNING: Withdraw 10 days prior to slaughter; contains high levels of copper; do not feed to sheep.

MANUFACTURED BY:
SKILLATHON FEED

NET WEIGHT 50 POUNDS (22.7 KILOGRAMS) OR AS
SHOWN ON SHIPPING DOCUMENT

How to Read a Feed Tag

Pig Grower Feed Tag Questions

1. What is the main ingredient in this feed?
2. How many active drug ingredients are in this feed?
3. What is the minimum crude protein level?
4. For how many days prior to slaughter should this feed be removed?
5. What is the minimum crude fat level of this diet?
6. Is ground limestone included in the ingredients of this diet?
7. At what stage of growth should this ration be fed?

- Pig Grower Answers:**
1. grain products
 2. 2
 3. 19%
 4. 10
 5. 5%
 6. yes
 7. pigs weighing between 30 and 75 pounds

Name of Drug _____

OMNIBIOTIC

(hydrocillin) _____

Active Ingredients _____

Directions for use: See package insert

Warning: Milk that has been taken from animals during treatment and for 48 hours after the last treatment must not be used for food. The use of this drug must be discontinued for 30 days before treated animals are slaughtered for food. Exceeding the highest recommended dosage level may result in antibiotic residues in meat or milk beyond the withdrawal time.

Cautions and Warnings _____

Withholding Times _____

Store between 2° and 8° C (36° and 46° F) _____

Storage _____

Keep dry and away from light

Quantity of Contents _____

Net Contents: 100 ml

Distributed by

USA Animal Health, Inc. _____

Name of Distributor _____

Lot Number _____

Lot # 0009900-Q123

Expiration Date 05/17/XX

Date of Expiration _____

TAKE TIME



OBSERVE LABEL DIRECTIONS